

Gauge specifications - Based on TP300 model (see related datasheet for more info)

- Diameters: 63-80-100-125-150-200 mm
- Case and ring: st. st. 304, bayonet type ring
- Protection degree: IP65 (EN60529/IEC529)
- Window: acrylic
- Movement: st.st., reinforced
- Dial: aluminium with black numerals on white background
- Pointer: aluminium, black painted, adjustable
- Blow out: neoprene, upper
- Mounting:
 - Type A bottom connection, direct mounting
 - Type D back connection, direct mounting
 - Type DC center back connection, direct mounting
- Accuracy: class 1, acc. to EN837 (class 1,6 for DN63) at 20°C
- Ambient temperature limit: -40/+60°C
- Construction acc. to ATEX directive 94/9/EC, gr.II cat. 2GDc (on request)

Introduction

PCI's hygienic diaphragm seal gauges are manufactured to the highest possible standard in the United Kingdom, for use in the food process and pharmaceutical industry.

Special features

- Designed to prevent measurement errors caused by high or fluctuating temperatures
- Flush welded diaphragm (free of dead space)
- Diaphragm protected against rupture with backup convolution
- Helium leak tested to ensure integrity of diaphragm
- Suitable for CIP and SIP processes

Measuring range

Min. 0 to 1bar, max. 0 to 25bar or 0 to 40bar, vacuum and compound ranges

Diaphragm seal specifications

(See next page for hygienic connection types)

- Body material: AISI316L
- Nut material: AISI304
- Wetted parts and diaphragm material: AISI316L
- Surface roughness of wetted parts: Ra ≤ 0.76 µm

Options

- Electropolished diaphragm with surface Roughness Ra <0.4µm for high cleanability in CIP process
- Diaphragm connected to pressure gauge using a cooling tower or capillary
- Autoclave version for up 150°C ambient
- Glycerine filling for ambient temperature -25/+60°C
- Silicone oil filling for ambient temperature -40/+60°C
- Electric contact switches
- Acrylic window with max value pointer resettable from front

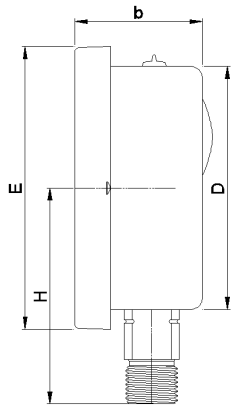
Available certification

- 2.1 Certificate of conformity
- 3.1 Material cert
- Test certificate for indication accuracy
- FDA conformity for system fill fluid
- Atex certificate
- Others on request

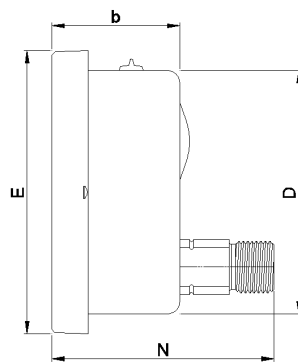
How to order

Please specify: Model, case size, mounting, range, diaphragm seal, options, certificates
Example: TP300, 100mm, A, 0-10 bar, 2" tri-clamp, glycerine, test certificate

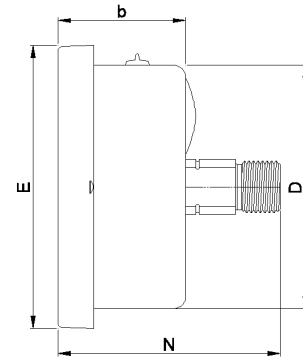




Type A

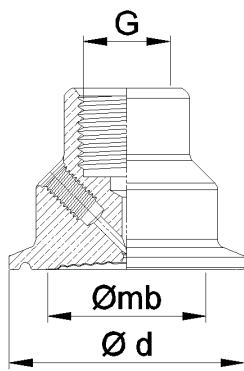


Type D

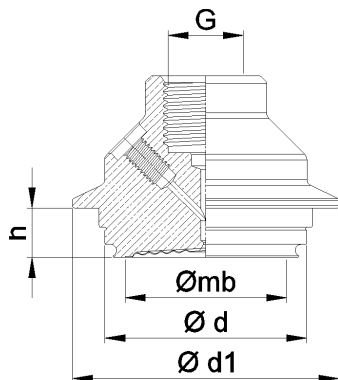


Type DC

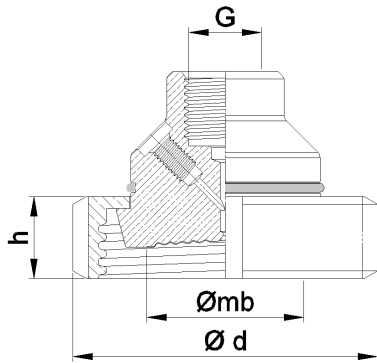
DN	b	D	E	H	L	N	S	Connection	Weight kg dry	Weight kg gly filled
63	30	63	68	52	75	50	85	¼" BSP/NPT	0,200	0,300
80	47	80	88	63	97	82	102	½" BSP/NPT	0,400	0,600
100	51	101	115	87	116	87	130	½" BSP/NPT	0,700	1,050
125	51	127	121	106	150	87	170	½" BSP/NPT	1,200	1,500
150	57	150	166	125	175	89	190	½" BSP/NPT	1,400	1,900
200	57	200	218	170	205	100	245	½" BSP/NPT	2,100	3,000



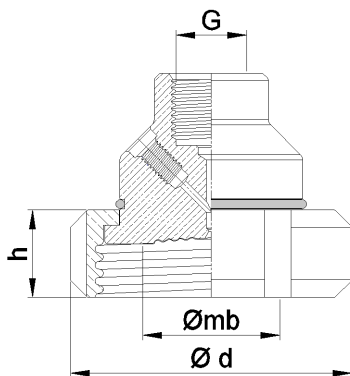
TRI-CLAMP – Standard ISO 2852				
Max pressure dependant on size and clamp type used				
DN	d	mb	G	Weight kg
1/2" / 3/4"	25	17	¼" BSP	0.2
1"	50.5	23	½" BSP	0.3
1 ½"	50.5	34	½" BSP	0.3
2"	64	46	½" BSP	0.5
2 ½"	77.5	58	½" BSP	0.6
3"	91	69	½" BSP	0.9
4"	119	95	½" BSP	1.5



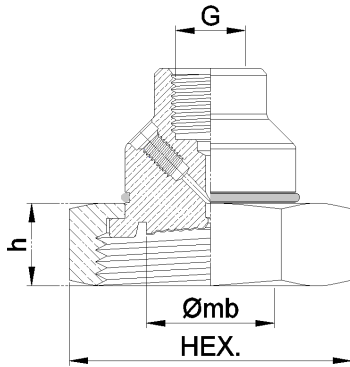
VARIVENT® COMPATIBLE CONNECTION (Model TU)						
(Trademark of Tuchenhausen GmbH)						
Max Working Pressure 40bar						
Type	d1	d	h	mb	G	Weight kg
Form F	66	50	12.3	40	½" BSP	0.5
Form N	84	68	12.3	57	½" BSP	1.1



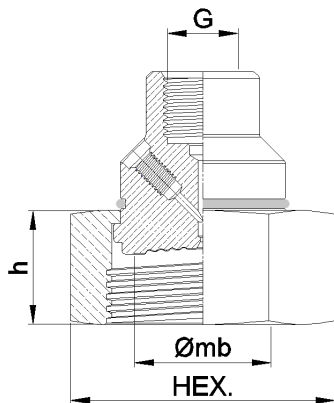
DIN – Standard 11851 (Model D1) DN 25-40 Max Working Pressure 40bar DN 50-80 Max Working Pressure 25bar					
DN	d	mb	h	g1	Weight kg
25	63	30	21	½" BSP	0.5
32	70	36	21	½" BSP	0.6
40	78	40	21	½" BSP	0.7
50	92	50	22	½" BSP	1.1
65	112	52	25	½" BSP	1.5
80	127	72	29	½" BSP	2.0



SMS – Standard 1145 Max Working Pressure 25bar					
DN	d	mb	h	g1	Weight kg
1"	51	25	19	½" BSP	0.3
1 ½"	74	36	23	½" BSP	0.7
2"	84	48	24	½" BSP	0.9
2 ½"	100	52	28	½" BSP	1.3
3"	114	72	31	½" BSP	2.0



RJT APV– Standard BS 4825 Max Working Pressure 40bar					
DN	HEX	mb	h	g1	Weight kg
1"	51	21	22	½" BSP	0.4
1 ½"	65	34	22	½" BSP	0.6
2"	79	46	22	½" BSP	0.9
2 ½"	92	60	22	½" BSP	1.2
3"	105	72	22	½" BSP	1.7



IDF – Standard BS 4825 Max Working Pressure 40bar					
DN	HEX	mb	h	g1	Weight kg
1"	46	24	30	½" BSP	0.4
1 ½"	60	34	30	½" BSP	0.7
2"	75	45	30	½" BSP	1.0
2 ½"	90	60	30	½" BSP	1.6
3"	105	72	30	½" BSP	2.0